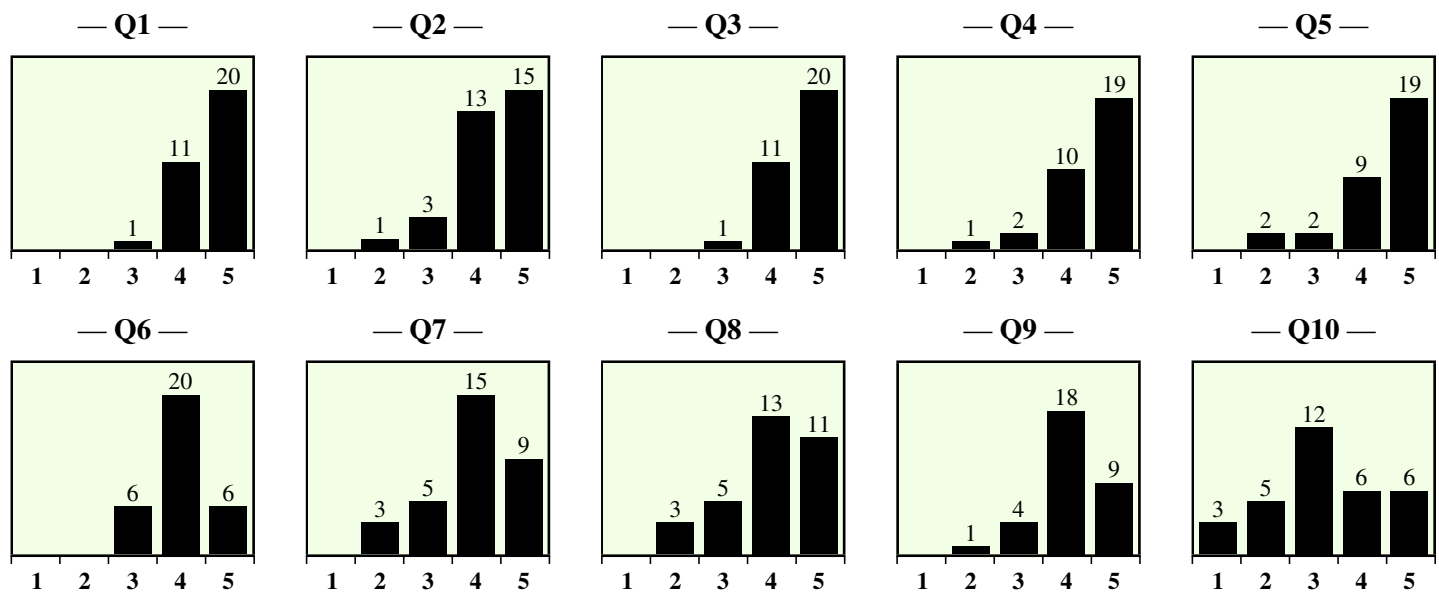


Averages

| Question | N | Avg. | Group | S.D. |
|--|----|-------------|-------|------|
| Instructor Evaluation | | | | |
| Q1 The instructor was well-prepared for class | 32 | 4.59 | 4.50 | 0.36 |
| Q2 The instructor treated students with respect | 32 | 4.31 | 4.53 | 0.35 |
| Q3 The instructor raised challenging questions or problems | 32 | 4.59 | 4.17 | 0.38 |
| Q4 Overall, the instructor is an effective teacher | 32 | 4.47 | 4.19 | 0.53 |
| Q5 I would recommend this instructor to other students..... | 32 | 4.41 | 4.13 | 0.58 |
| Course/Materials Evaluation | | | | |
| Q6 The readings (text, course notes, etc) were important for understanding the course .. | 32 | 4.00 | 3.81 | 0.46 |
| Q7 The term projects (papers, assignments, etc.) provided a useful learning experience . | 32 | 3.94 | 4.11 | 0.31 |
| Q8 I would recommend this course to other students | 32 | 4.00 | 3.88 | 0.44 |
| Q9 Compared to other courses at this level, the workload was | 32 | 4.09 | 3.82 | 0.46 |
| Q10 The course material was difficult for my level of preparation..... | 32 | 3.22 | 3.14 | 0.30 |

Explanations: The relevant course group for comparisons is Undergraduate Required Courses (200-299,390-399,490-499). **N** is the number of responses for a question. **Avg.** is your average. **Group** is the average for the reference group. **S.D.** is the standard deviation of the averages for all courses in the reference group.

Response Distribution (by Question Number)



Questionnaire Response Scales

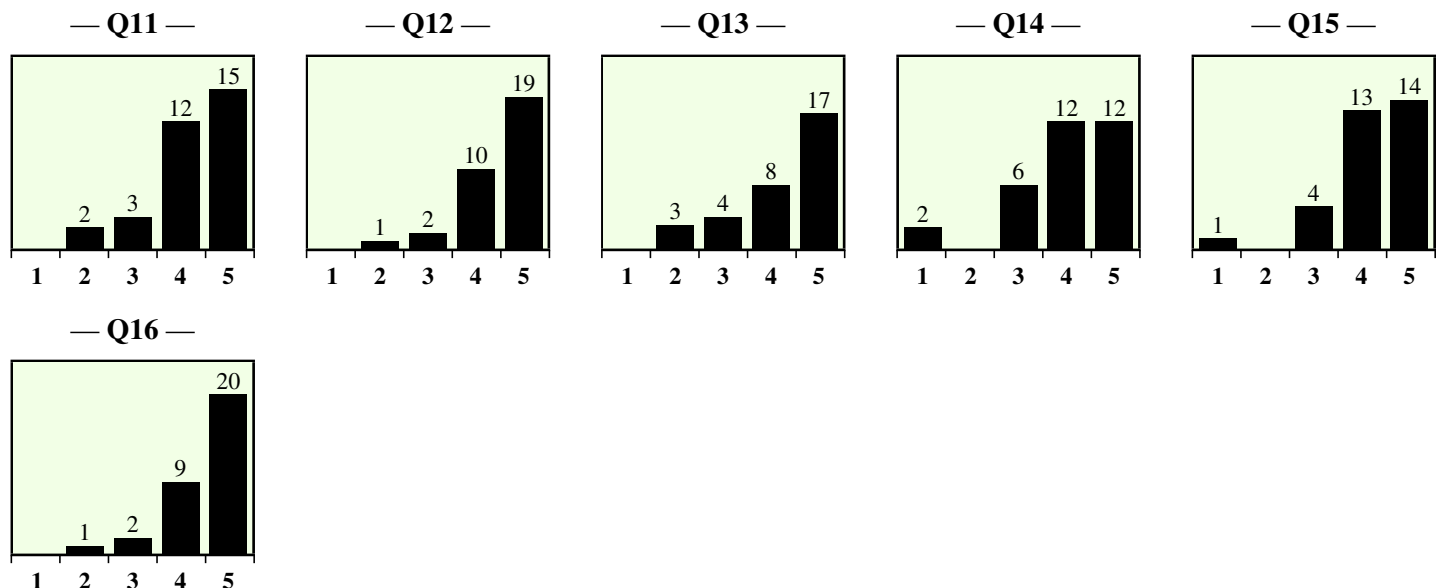
| Questions | 1 | 2 | 3 | 4 | 5 |
|-----------|-------------------|----------|----------|-------|----------------|
| 1-8,10 | strongly disagree | disagree | neutral | agree | strongly agree |
| 9 | much less | less | the same | more | much more |

Averages

| Question | N | Avg. | Group | S.D. |
|---|----|-------------|-------|------|
| University Wide Instructor Evaluation | | | | |
| Q11 The instructor made it clear what students were expected to learn | 32 | 4.25 | 4.10 | 0.46 |
| Q12 The instructor communicated the subject matter effectively | 32 | 4.47 | 4.09 | 0.53 |
| Q13 The instructor helped inspire interest in learning the subject matter | 32 | 4.22 | 3.92 | 0.54 |
| Q14 Overall, evaluation of student learning (through exams, essays, presentations, etc.) was fair | 32 | 4.00 | 4.01 | 0.43 |
| Q15 The instructor showed concern for student learning | 32 | 4.22 | 4.22 | 0.41 |
| Q16 Overall, the instructor was an effective teacher | 32 | 4.50 | 4.14 | 0.54 |

Explanations: The relevant course group for comparisons is Undergraduate Required Courses (200-299,390-399,490-499). **N** is the number of responses for a question. **Avg.** is your average. **Group** is the average for the reference group. **S.D.** is the standard deviation of the averages for all courses in the reference group.

Response Distribution (by Question Number)



Questionnaire Response Scale

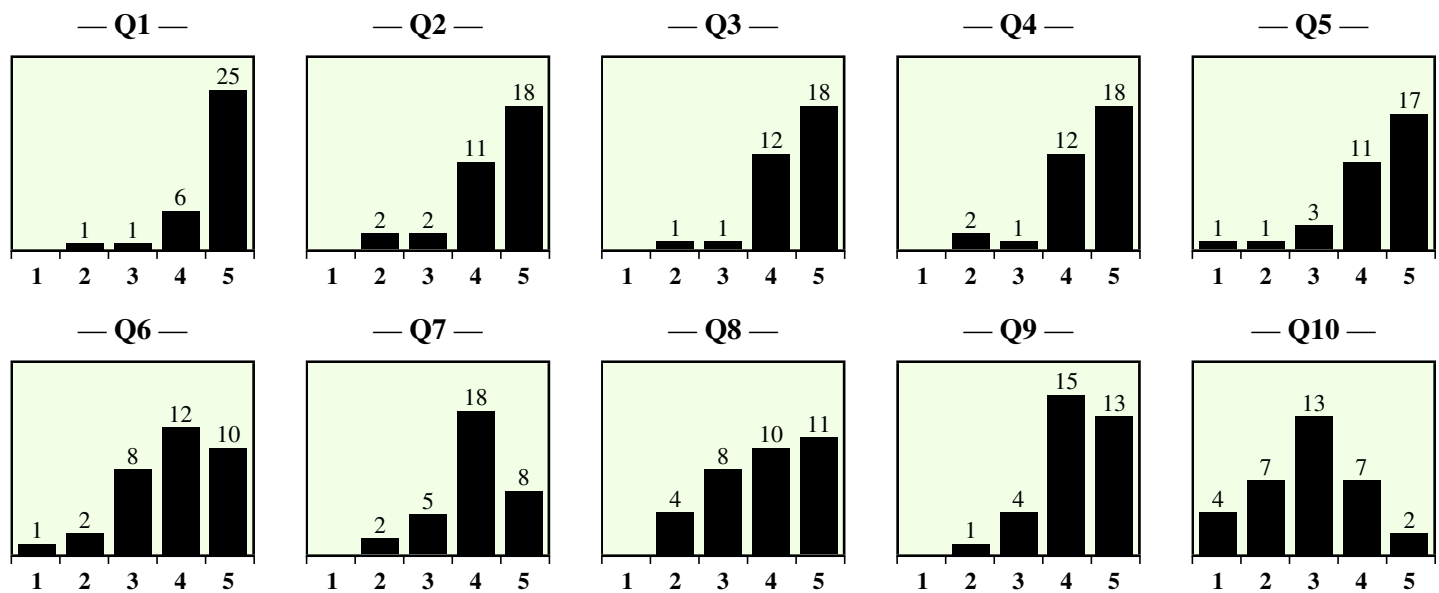
| Questions | 1 | 2 | 3 | 4 | 5 |
|-----------|-----------|------|----------|------|-----------|
| 11-16 | very poor | poor | adequate | good | excellent |

Averages

| Question | N | Avg. | Group | S.D. |
|--|----|-------------|-------|------|
| Instructor Evaluation | | | | |
| Q1 The instructor was well-prepared for class | 33 | 4.67 | 4.50 | 0.36 |
| Q2 The instructor treated students with respect | 33 | 4.36 | 4.53 | 0.35 |
| Q3 The instructor raised challenging questions or problems | 32 | 4.47 | 4.17 | 0.38 |
| Q4 Overall, the instructor is an effective teacher | 33 | 4.39 | 4.19 | 0.53 |
| Q5 I would recommend this instructor to other students..... | 33 | 4.27 | 4.13 | 0.58 |
| Course/Materials Evaluation | | | | |
| Q6 The readings (text, course notes, etc) were important for understanding the course .. | 33 | 3.85 | 3.81 | 0.46 |
| Q7 The term projects (papers, assignments, etc.) provided a useful learning experience . | 33 | 3.97 | 4.11 | 0.31 |
| Q8 I would recommend this course to other students | 33 | 3.85 | 3.88 | 0.44 |
| Q9 Compared to other courses at this level, the workload was | 33 | 4.21 | 3.82 | 0.46 |
| Q10 The course material was difficult for my level of preparation..... | 33 | 2.88 | 3.14 | 0.30 |

Explanations: The relevant course group for comparisons is Undergraduate Required Courses (200-299,390-399,490-499). **N** is the number of responses for a question. **Avg.** is your average. **Group** is the average for the reference group. **S.D.** is the standard deviation of the averages for all courses in the reference group.

Response Distribution (by Question Number)



Questionnaire Response Scales

| Questions | 1 | 2 | 3 | 4 | 5 |
|-----------|-------------------|----------|----------|-------|----------------|
| 1-8,10 | strongly disagree | disagree | neutral | agree | strongly agree |
| 9 | much less | less | the same | more | much more |

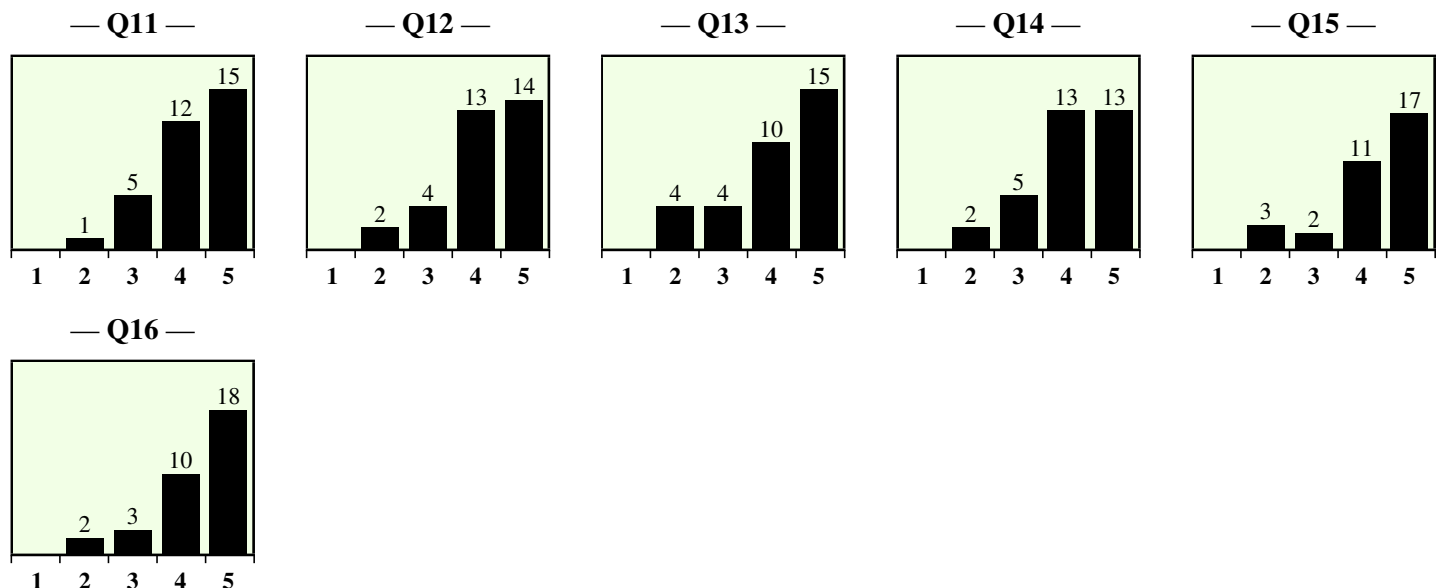


Averages

| Question | N | Avg. | Group | S.D. |
|---|----|-------------|-------|------|
| University Wide Instructor Evaluation | | | | |
| Q11 The instructor made it clear what students were expected to learn | 33 | 4.24 | 4.10 | 0.46 |
| Q12 The instructor communicated the subject matter effectively | 33 | 4.18 | 4.09 | 0.53 |
| Q13 The instructor helped inspire interest in learning the subject matter | 33 | 4.09 | 3.92 | 0.54 |
| Q14 Overall, evaluation of student learning (through exams, essays, presentations, etc.) was fair | 33 | 4.12 | 4.01 | 0.43 |
| Q15 The instructor showed concern for student learning | 33 | 4.27 | 4.22 | 0.41 |
| Q16 Overall, the instructor was an effective teacher | 33 | 4.33 | 4.14 | 0.54 |

Explanations: The relevant course group for comparisons is Undergraduate Required Courses (200-299,390-399,490-499). **N** is the number of responses for a question. **Avg.** is your average. **Group** is the average for the reference group. **S.D.** is the standard deviation of the averages for all courses in the reference group.

Response Distribution (by Question Number)



Questionnaire Response Scale

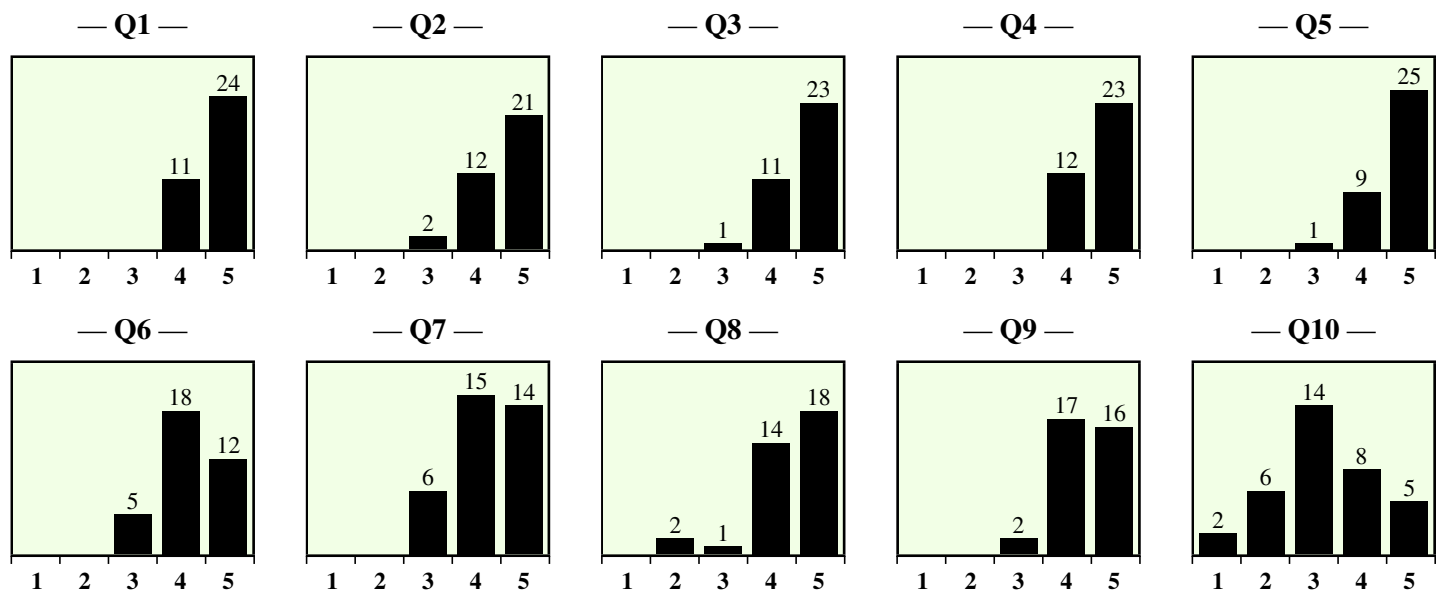
| Questions | 1 | 2 | 3 | 4 | 5 |
|-----------|-----------|------|----------|------|-----------|
| 11-16 | very poor | poor | adequate | good | excellent |

Averages

| Question | N | Avg. | Group | S.D. |
|--|----|-------------|-------|------|
| Instructor Evaluation | | | | |
| Q1 The instructor was well-prepared for class | 35 | 4.69 | 4.50 | 0.36 |
| Q2 The instructor treated students with respect | 35 | 4.54 | 4.53 | 0.35 |
| Q3 The instructor raised challenging questions or problems | 35 | 4.63 | 4.17 | 0.38 |
| Q4 Overall, the instructor is an effective teacher | 35 | 4.66 | 4.19 | 0.53 |
| Q5 I would recommend this instructor to other students..... | 35 | 4.69 | 4.13 | 0.58 |
| Course/Materials Evaluation | | | | |
| Q6 The readings (text, course notes, etc) were important for understanding the course .. | 35 | 4.20 | 3.81 | 0.46 |
| Q7 The term projects (papers, assignments, etc.) provided a useful learning experience . | 35 | 4.23 | 4.11 | 0.31 |
| Q8 I would recommend this course to other students | 35 | 4.37 | 3.88 | 0.44 |
| Q9 Compared to other courses at this level, the workload was | 35 | 4.40 | 3.82 | 0.46 |
| Q10 The course material was difficult for my level of preparation..... | 35 | 3.23 | 3.14 | 0.30 |

Explanations: The relevant course group for comparisons is Undergraduate Required Courses (200-299,390-399,490-499). **N** is the number of responses for a question. **Avg.** is your average. **Group** is the average for the reference group. **S.D.** is the standard deviation of the averages for all courses in the reference group.

Response Distribution (by Question Number)



Questionnaire Response Scales

| Questions | 1 | 2 | 3 | 4 | 5 |
|-----------|-------------------|----------|----------|-------|----------------|
| 1-8,10 | strongly disagree | disagree | neutral | agree | strongly agree |
| 9 | much less | less | the same | more | much more |

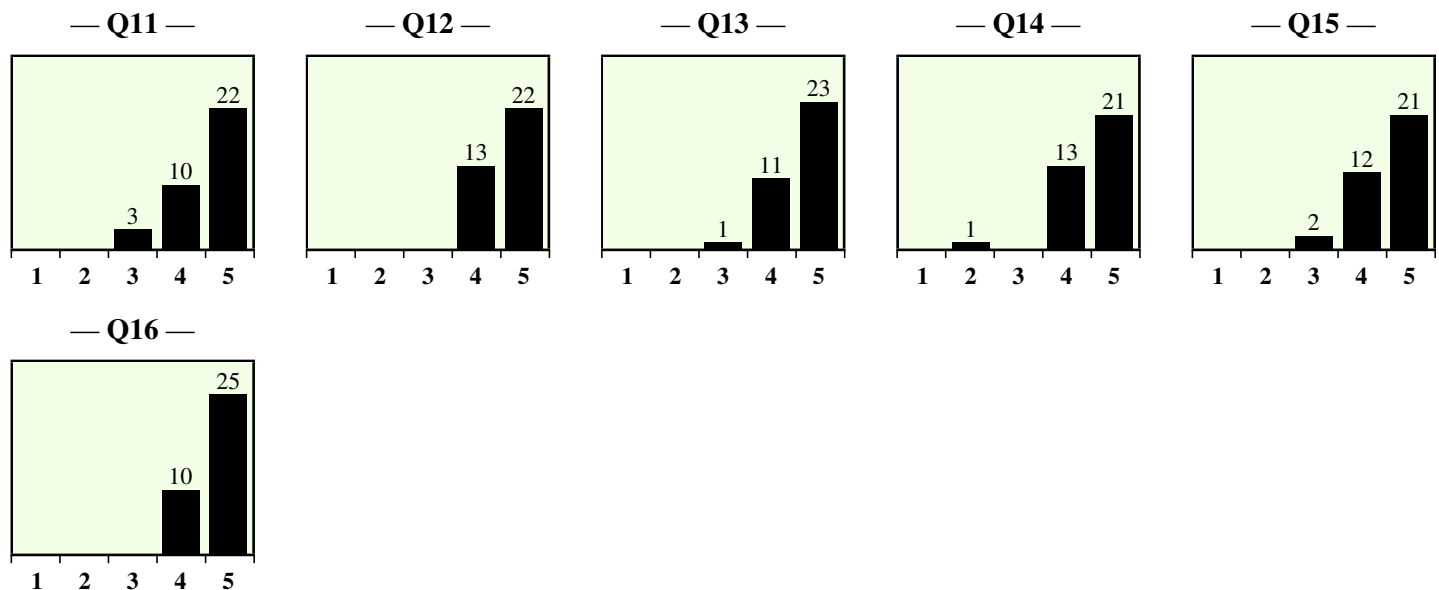


Averages

| Question | N | Avg. | Group | S.D. |
|---|----|-------------|-------|------|
| University Wide Instructor Evaluation | | | | |
| Q11 The instructor made it clear what students were expected to learn | 35 | 4.54 | 4.10 | 0.46 |
| Q12 The instructor communicated the subject matter effectively | 35 | 4.63 | 4.09 | 0.53 |
| Q13 The instructor helped inspire interest in learning the subject matter | 35 | 4.63 | 3.92 | 0.54 |
| Q14 Overall, evaluation of student learning (through exams, essays, presentations, etc.) was fair | 35 | 4.54 | 4.01 | 0.43 |
| Q15 The instructor showed concern for student learning | 35 | 4.54 | 4.22 | 0.41 |
| Q16 Overall, the instructor was an effective teacher | 35 | 4.71 | 4.14 | 0.54 |

Explanations: The relevant course group for comparisons is Undergraduate Required Courses (200-299,390-399,490-499). **N** is the number of responses for a question. **Avg.** is your average. **Group** is the average for the reference group. **S.D.** is the standard deviation of the averages for all courses in the reference group.

Response Distribution (by Question Number)



Questionnaire Response Scale

| Questions | 1 | 2 | 3 | 4 | 5 |
|-----------|-----------|------|----------|------|-----------|
| 11-16 | very poor | poor | adequate | good | excellent |



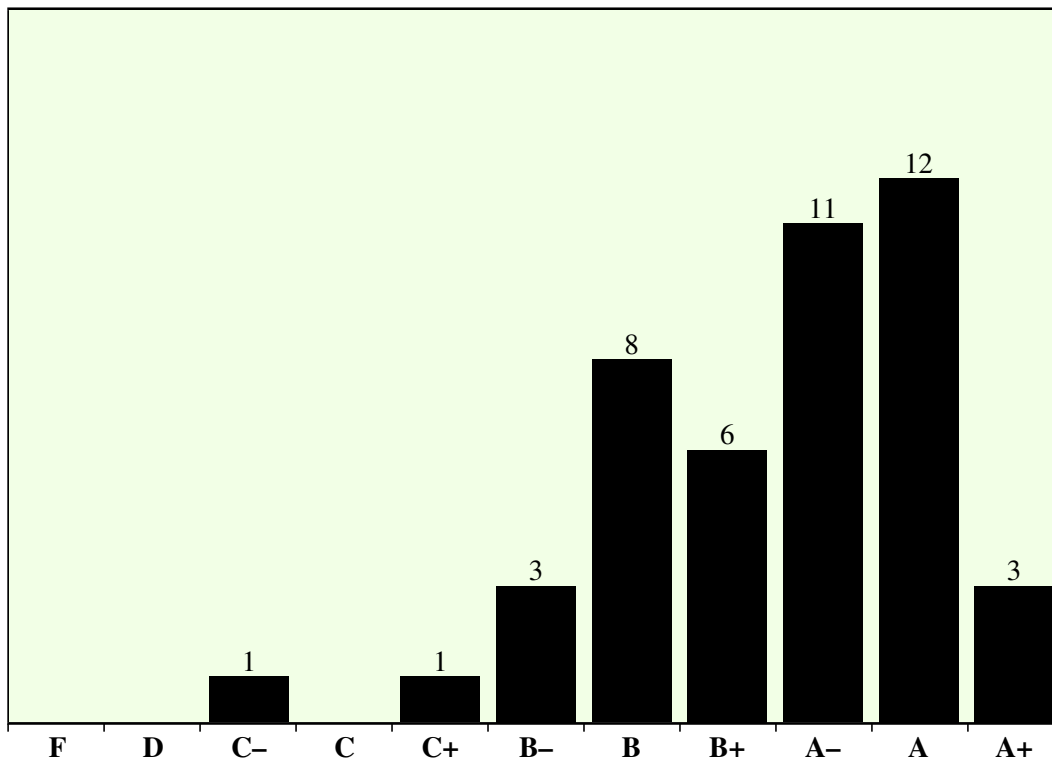
Grades Summary

| Letter Grade | Score Range | (#) | within (%) | below (%) | Letter Range | |
|--------------|-------------|-----|------------|-----------|--------------|------|
| | | | | | (#) | (%) |
| A+ | 90–100 | 3 | 6.7 | 93.3 | 26 | 57.8 |
| A | 85–89 | 12 | 26.7 | 66.7 | | |
| A– | 80–84 | 11 | 24.4 | 42.2 | | |
| B+ | 76–79 | 6 | 13.3 | 28.9 | 17 | 37.8 |
| B | 72–75 | 8 | 17.8 | 11.1 | | |
| B– | 68–71 | 3 | 6.7 | 4.4 | | |
| C+ | 64–67 | 1 | 2.2 | 2.2 | 2 | 4.4 |
| C | 60–63 | 0 | 0.0 | 2.2 | | |
| C– | 55–59 | 1 | 2.2 | 0.0 | | |
| D | 50–54 | 0 | 0.0 | 0.0 | | |
| F | 0–49 | 0 | 0.0 | 0.0 | | |

| | |
|--------------------|-----------|
| Students | 45 |
| Grades | 45 |
| Grades Mean | 79.6 |
| Standard Deviation | 7.1 |
| Skewness | -0.81 |
| Median | 80.0 |
| Top Quartile | 85.0 |
| Bottom Quartile | 75.0 |
| Mode | 86.0 |
| Students failed | 0 |
| Percentage failed | 0.0 |
| Missing Grades | 0 |
| Percentage missing | 0.0 |

Grades Distribution

Number of Students in Each Letter Grade Group





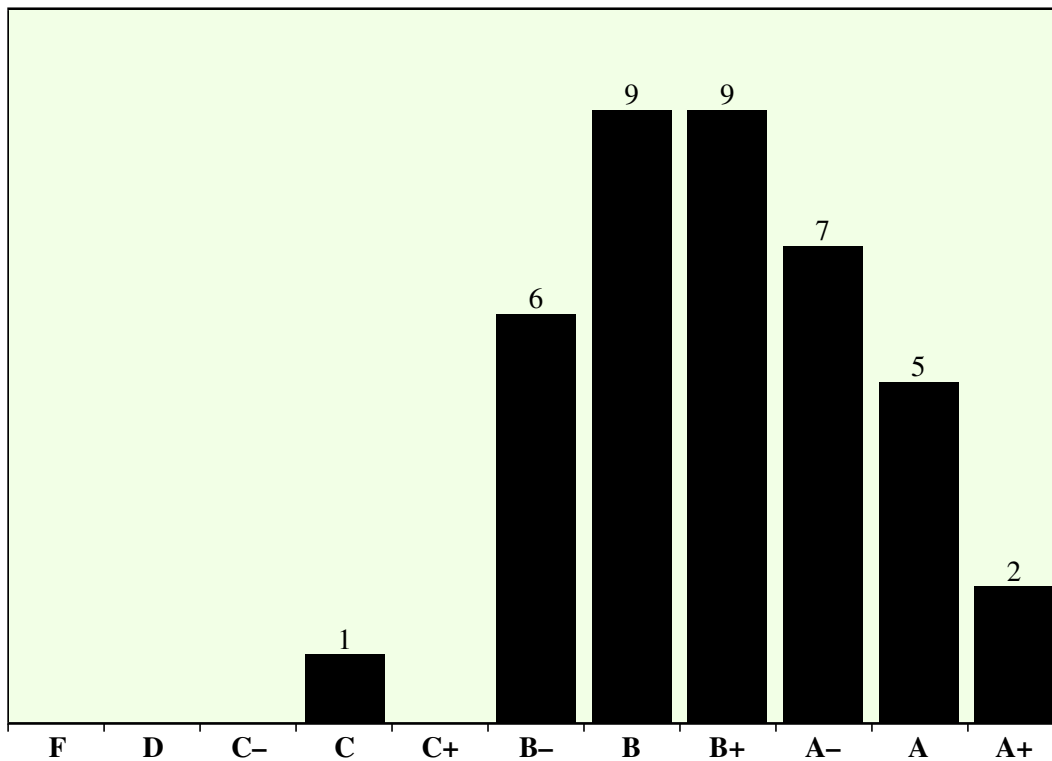
Grades Summary

| Letter Grade | Score Range | (#) | within (%) | below (%) | Letter Range | |
|--------------|-------------|-----|------------|-----------|--------------|------|
| | | | | | (#) | (%) |
| A+ | 90-100 | 2 | 5.1 | 94.9 | 14 | 35.9 |
| A | 85-89 | 5 | 12.8 | 82.1 | | |
| A- | 80-84 | 7 | 17.9 | 64.1 | | |
| B+ | 76-79 | 9 | 23.1 | 41.0 | 24 | 61.5 |
| B | 72-75 | 9 | 23.1 | 17.9 | | |
| B- | 68-71 | 6 | 15.4 | 2.6 | | |
| C+ | 64-67 | 0 | 0.0 | 2.6 | 1 | 2.6 |
| C | 60-63 | 1 | 2.6 | 0.0 | | |
| C- | 55-59 | 0 | 0.0 | 0.0 | | |
| D | 50-54 | 0 | 0.0 | 0.0 | | |
| F | 0-49 | 0 | 0.0 | 0.0 | | |

| | |
|--------------------|-----------|
| Students | 45 |
| Grades | 39 |
| Grades Mean | 77.1 |
| Standard Deviation | 6.7 |
| Skewness | 0.05 |
| Median | 76.0 |
| Top Quartile | 81.0 |
| Bottom Quartile | 72.0 |
| Mode | 76.0 |
| Students failed | 0 |
| Percentage failed | 0.0 |
| Missing Grades | 6 |
| Percentage missing | 13.3 |

Grades Distribution

Number of Students in Each Letter Grade Group





Grades Summary

| Letter Grade | Score Range | (#) | within (%) | below (%) | Letter Range | |
|--------------|-------------|-----|------------|-----------|--------------|------|
| | | | | | (#) | (%) |
| A+ | 90-100 | 2 | 4.4 | 95.6 | 17 | 37.8 |
| A | 85-89 | 5 | 11.1 | 84.4 | | |
| A- | 80-84 | 10 | 22.2 | 62.2 | | |
| B+ | 76-79 | 7 | 15.6 | 46.7 | 25 | 55.6 |
| B | 72-75 | 9 | 20.0 | 26.7 | | |
| B- | 68-71 | 9 | 20.0 | 6.7 | | |
| C+ | 64-67 | 1 | 2.2 | 4.4 | 3 | 6.7 |
| C | 60-63 | 1 | 2.2 | 2.2 | | |
| C- | 55-59 | 1 | 2.2 | 0.0 | | |
| D | 50-54 | 0 | 0.0 | 0.0 | | |
| F | 0-49 | 0 | 0.0 | 0.0 | | |

| | |
|--------------------|-----------|
| Students | 46 |
| Grades | 45 |
| Grades Mean | 76.3 |
| Standard Deviation | 7.7 |
| Skewness | 0.02 |
| Median | 76.0 |
| Top Quartile | 82.0 |
| Bottom Quartile | 71.0 |
| Mode | 72.0 |
| Students failed | 0 |
| Percentage failed | 0.0 |
| Missing Grades | 1 |
| Percentage missing | 2.2 |

Grades Distribution

Number of Students in Each Letter Grade Group

